

FALL - WINTER SAVINGS

SPECIALS GOOD DECEMBER 1ST THROUGH FEBRUARY 28TH, 2011 *** SUBJECT TO CHANGE ***

GREAT DEALS ON HOLIDAY GIFT IDEAS !!

PAGE 2



JACKETS & GLOVES
PAGE 4



****FREE** GRINDER**



PAGE 4

PAGE 17



POLARIZED SAFETY GLASSES



PAGE 20



PAGE 19

AUTO-DARKENING WELDING HELMETS



PAGE 6



PAGE 6-7



PAGE 7



WELDERS & PLASMA CUTTERS
PAGES 8-10



PLASMA CUTTERS – PAGE 11



CASH BACK & FREE PRODUCT
PAGE 12



MIG WELDERS – PAGE 13



STEEL SAW 1



7" STEEL CUTTING CIRCULAR SAW

CUTS UP TO 2" OF 1/4" MATERIAL
HEAVY DUTY CONSTRUCTION
LONG LASTING BLADE LIFE
1200 WATT MOTOR, 0-45 BEVEL
INCLUDES 7" STEEL BLADE, CASE,
GOGGLES, WRENCH & SIDE HANDLE

\$ 179

STEEL SAW 5



9" STEEL CUTTING CIRCULAR SAW

CUTS UP TO 3" OF 1/2" MATERIAL
HEAVY DUTY CONSTRUCTION
LONG LASTING BLADE LIFE
1750 WATT MOTOR, 0-45 BEVEL
INCLUDES 9" STEEL BLADE, CASE,
GOGGLES, WRENCH & SIDE HANDLE

\$ 349

STEEL SAW 2



14" STEEL CUTTING SAW

CUTS UP TO 4-3/4" OF 1/4" MATERIAL
HEAVY DUTY CONSTRUCTION
LONG LASTING BLADE LIFE
POWERFUL 2200 WATT, 1300
RPM MOTOR -INCLUDES BLADE

\$ 399

ME3500 MUSTANG

ME3500 MAG DRILL



CUTS UP TO 2" DEPTH MATERIAL
HEAVY DUTY CONSTRUCTION
POWERFUL 12000 WATT MOTOR
CUT DIAMETER 7-1/16" - 1-1/2"
** INCLUDES 6 PC CYCLONE
ANNULAR CUTTER SET **

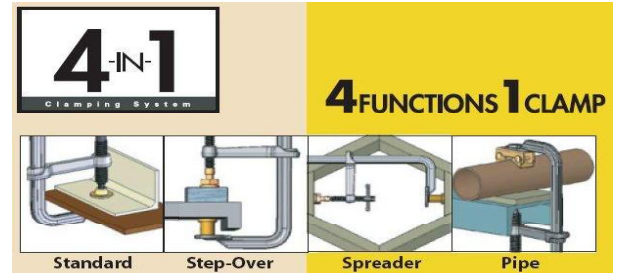
\$ 599



4 IN 1 COMBINATION CLAMPS



- # UD45-C3 4.5" MINI CLAMP \$ 12
- # UD65-C3 6.5" MINI CLAMP \$ 15
- # UF65-C3 6.5" HEAVY DUTY CLAMP \$ 22
- # UM85P-C3 8.5" HEAVY DUTY CLAMP \$ 39
- # UM125-C3 12.5" HEAVY DUTY CLAMP \$ 59

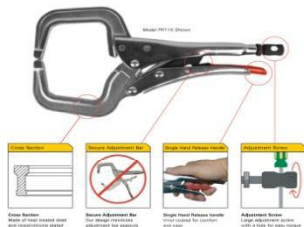


NOMAD PORTABLE WELDING TABLE



\$ 129

IMPROVED LOCKING C-CLAMPS



- #PR6 6" PLIERS \$ 11
- # PR6S 6" W/ SWIVEL PADS \$ 12
- #PR115 11.5" PLIERS \$ 14
- #PR115S 11.5" W/ SWIVEL PADS \$ 15
- #PR18 18" PLIERS \$ 26
- #PR18S 18" W/ SWIVEL PADS \$ 27

FREE 4 1/2" GRINDER PROMOTION !!

PURCHASE ANY COMBINATION OF 100 SAIT GRINDING WHEELS AND Z-TECH .045 CUTTING WHEELS @ \$2.49 EA AND **RECEIVE A FREE METABO W8-115 4-1/2" GRINDER**
PART#'S - 20060, 20063, 23324, 23334



SAIT

\$ 249



metabo



A24N - Fast Grinding
~ Aluminum oxide grain
~ Soft bond for **fast stock removal**
Ferrous Metals (iron, steel, welds, etc.)
Low grade stainless steel

A24R - Long Life
~ Aluminum oxide grain; our most popular wheel
~ For general purpose grinding
~ **Longer life** for fewer wheel changes
Ferrous Metals (iron, steel, welds, etc.)



Z-Tech - High Performance

- So unique it has a patent
- Thin .045 width
- Special zirconium grain
- Hard bond for extremely long life
- **Fast, burr-free cutting**
STEEL OR STAINLESS



METABO W8-115
REG. PRICE
\$129



**** NEW ** PFERD POLIFAN CURVE 4.5" FLAP WHEELS**

- Ultimate tool for grinding fillet welds
- Premium Zirconia material used in the disc will provide excellent service life
- Tough and aggressive - removes scale and bead from all metals: steel, stainless and alloys.
- Works faster than grinding wheels without the risk of undercutting the workpiece.
- Smooth finish allows easy visual inspection for defects, such as porosity and inclusions.



INTRODUCTORY SALE PRICE \$ 9.95 EA



ENDUROFLEX FLAP WHEELS

06B(XXX) FOR FINISHING
STEEL & STAINLESS

\$ 8.95 EA

06F(XXX) FOR FINISHING STEEL,
STAINLESS & ALUMINUM

\$ 9.95 EA

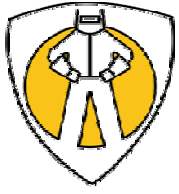
ZIPCUT .045 CUTTING WHEEL

11T042

EXTRA FAST CUTTING ON STEEL,
AND STAINLESS.

\$ 3.25 EA





TILLMAN™



Now welders can reach, bend, twist and stretch -
THE FREEDOM TO MOVE.

Indura® stretch FR fabric inserts provide optimal
fit and better movement.

**** NEW ** FREEDOM FLEX WELDING JACKETS**



#6360 GREEN

\$ 22



#9360 BLUE/LEATHER SLEEVE

\$ 42



#6360 HI-VIS ORANGE

\$ 25

QUALITY INNOVATIVE WELDING PROTECTION TO FIT YOUR STYLE



F/R COTTON
WELDING JACKET
IN KHAKI

\$ 23



F/R COTTON
WELDING JACKET
IN BLUE
W/FLAMES

\$ 25



F/R COTTON
SLEEVES WITH
SOFT COMFORT
ELASTIC

\$ 11

TILLMAN

PREMIUM STICK WELDING GLOVES



750L 875L
PREMIUM ELKSKIN
STICK WELDING
GLOVES

\$ 18 EA



TIGSTER

SOFT PREMIUM KIDSKIN
TIG WELDING GLOVE

\$ 18

TILLMAN

WINTER WEATHER WORK GLOVES



1578 COWHIDE

FOAM LINED \$ 4



1567 COWHIDE

THINSULATE LINED \$ 9



1485 TRUEFIT

THINSULATE LINED \$ 12



15FHL-GRAY

POLAR FLEECE \$ 8



BW50 WATERPROOF

W/CUFF STRAP \$ 15

JACKSON
SAFETY Brand

NeXGen

EQC AUTO-DARKENING LENS

Digital controls feature variable shade 9-13, sensitivity and delay adjustments

Four independent sensors positioned to reduce the possibility of blockage

Versatile 3-N-1 built-in function: Weld, Torch, Grind

Amber view lens allows for enhanced clarity of weld puddle

Technology allows unit to detect welds less than 5 amps



LIGHTWEIGHT HALO-X MODELS \$ 310



NEXGEN CARTRIDGE ONLY

\$ 265

BOSS

EQC AUTO-DARKENING LENS

13 square inches of viewing area - Largest viewing area in the JACKSON SAFETY* Brand ADF offering

Features variable shade 9-12, sensitivity and delay adjustments

Solar assisted with two independent sensors

Amber view lens allows for enhanced clarity of weld puddle

Technology allows the unit to detect welds less than 5 amps



LIGHTWEIGHT HALO-X MODELS \$ 299



BOSS CARTRIDGE ONLY

\$ 255

PRO VARIABLE EQC AUTO LENS

Features variable shade 9-12, sensitivity and delay adjustments

Battery powered, solar assisted with two independent sensors

Technology allows the unit to detect welds less than 5 amps



AVAILABLE IN HEAVY METAL AND I2 HALO X \$199

PRO SHADE 10 EQC LENS

Technology allows the unit to detect welds less than 5 amps

Fixed shade 10 lens with two independent sensors Features sensitivity and delay settings

Battery operated, solar assisted



HSL100 BLACK \$ 149

3M Speedglas® 9100X

The Speedglas 9100X with side windows, shades 8-13, sensitivity adjustment allows use with all Stick, MIG and TIG processes, also has grinding and torch modes. New headgear makes this helmet extremely comfortable and versatile. Viewing area of 9.12 sq in. The

Speedglas 9100 helmet and auto-darkening filters are based on our more than 25 years of expertise in developing and producing extraordinarily reliable and durable equipment for highly-discriminating professional welders.



06-0100-20SW

\$ 315



The new Speedglas 100 Welding Helmet delivers outstanding protection, comfort and performance with distinctive graphic designs. Welders can benefit from its excellent optical quality and reliable darkening at a highly affordable price. The Speedglas 100 welding helmet can be used with most arc welding processes, such as STICK, MIG and TIG applications

100 SERIES HELMETS

				
BLACK \$ 145	ACES HIGH \$ 170	BLAZED \$ 170	PATRIOTIC \$ 170	MECH SKULL \$ 170

DIGITAL Elite Series

SHADE 8 – 13, SHADE 3 LIGHT STATE, BATTERY POWERED, TIG WELD TO 5 AMPS, GRIND MODE, CUTTING MODE, "X-MODE," SENSITIVITY & DELAY SETTINGS
 2 YEAR WARRANTY

\$ 310



Elite Series

SHADE 8 – 13, SHADE 3 LIGHT STATE, BATTERY POWERED, TIG WELD TO 5 AMPS, GRIND MODE, SENSITIVITY & DELAY SETTINGS, 2 YEAR WARRANTY

\$ 285



DIGITAL CAMO VINTAGE USA STARS & STRIPES INFERNO WICKED JOKER CAMOUFLAGE

PERFORMANCE™ Series

FREE 2ND DAY AIR SHIPPING TO YOUR DOOR ON ANY NON-STOCK MILLER HELMETS

MID RANGE HELMET FOR ALL APPLICATIONS VARIABLE SHADE 8-13 W/ GRIND MODE THREE ARC SENSORS, REPLACEABLE BATTERY SENSITIVITY & DELAY ADJUSTMENTS 17 OZ., 2-YR WARRANTY

\$ 210



AMERICA'S EAGLE BLUE RAGE CAMOUFLAGE FIREBALL MILLERMATIC II

Pro-Hobby Series

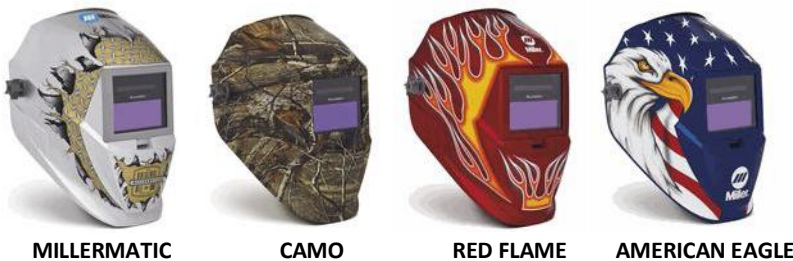
VARIABLE SHADE 8-12, LIGHT SHADE 3 2 SENSORS, TIG WELD TO 20 AMPS SENSITIVITY & DELAY ADJUSTMENTS

\$ 145



\$ 99

PRO HOBBY SHADE 10



MILLERMATIC CAMO RED FLAME AMERICAN EAGLE

POWERED AIR PURIFYING RESPIRATORS



9002X ADFLO PAPR SYSTEM
High Efficiency particulate respiratory protection for welders. Lightweight, slim, all-in-one design. Constant airflow rate regardless of battery charge and filter loading
15-1101-21SW \$ 1255



Miller PAPR with Elite Auto Dark Welding Helmet

Lightweight design, innovative shoulder straps and dual air speeds provide protection and maximum comfort.

235671 \$1055

WELDING FUME EXTRACTION SYSTEMS



226 CFM HIGH VOLUME CAPACITY
LIGHTWEIGHT PORTABLE UNIT FOR BENCHTOP & FIELDWORK
INCLUDES 10' EXTRACTION ARMUL LISTED, BUILT IN SPARK TRAP FOR FIRE SAFETY, JUST 40 LBS, LED FILTER STATUS
73-200G \$ 899



1200 CFM HIGH VOLUME EXTRACTION,
DESIGNED FOR SHOP FLOOR WITH MOBILITY TO MOVE STATIONS.
INCLUDES 10' EXTRACTION ARM.
HEAVY DUTY STEEL CONSTRUCTION WITH LOCKING CASTERS, BUILT IN AC OUTLET FOR POWER TOOLS

73-601 \$ 3199



ArcStation™ Workstations
The Only Workbench Designed for Welders

The new Miller ArcStation is the first-ever, all-in-one workstation designed for welding and metalworking. It's versatile. It's affordable. And it comes in two convenient table sizes: Approximately 30 in x 30 in or 30 in x 60 in to meet your space requirements. You can also customize your workbench with a wide range of handy accessories. Whether for the home shop or the fab shop, ArcStation's the answer you've been looking for.

CUSTOMIZED TABLE BELOW \$ 1299



CALL TODAY TO CUSTOMIZE AN ARCSTATION TO FIT YOUR NEEDS



HOBART HANDLER 140

WELDS UP TO 3/16" STEEL
115V MIG WELDER PACKAGE
INCLUDES TORCH, REGULATOR,
HOSE & GROUND CLAMP

500500 **\$ 499**



MILLER PASSPORT PLUS

WELDS UP TO 3/8" STEEL,
1/4" ALUMINUM
PORTABLE ALL-IN-ONE MIG
WELDER INCLUDES BUILT IN GAS
BOTTLE. 115/230V MULTI-VOLT

907401 **\$ 1599**



MILLERMATIC SERIES MIG WELDERS & SPOOLMATE SPOOLGUNS



**MILLERMATIC 140
W/AUTOSET**

WELDS UP TO 3/16" STEEL,
14 GAUGE ALUMINUM WITH
OPTIONAL SPOOLMATE 100

907335 **\$685**



**MILLERMATIC 180
W/AUTOSET**

WELDS UP TO 5/16" STEEL,
1/4 " ALUMINUM WITH
OPTIONAL SPOOLMATE 100

907312 **\$830**



**MILLERMATIC 211
W/AUTOSET**

WELDS UP TO 3/8" STEEL,
3/8" ALUMINUM WITH
OPTIONAL SPOOLMATE 100
115/230 DUAL VOLTAGE

907422 **\$999**



SPOOLMATE 100

EASILY CONNECTS TO
MILLERMATIC 140, 180, 211,
AND PASSPORT PLUS FOR
ALUMINUM WELDING

300371 **\$199**



**MILLERMATIC 212
W/AUTOSET**

WELDS UP TO 3/8" STEEL,
3/8" ALUMINUM WITH
OPTIONAL SPOOLMATE 200

907405 **\$1599**

PACKAGE W/SPOOLMATE 200

951177 **\$2350**



MILLERMATIC 252

WELDS UP TO 1/2" STEEL,
1/2" ALUMINUM WITH
OPTIONAL SPOOLMATIC 30A

907321 **\$2150**

PACKAGE W/ SPOOLMATIC 30A

951066 **\$3260**



SPOOLMATE 200

EASILY CONNECTS TO
MILLERMATIC 211, 212, 252
FOR ALUMINUM WELDING

300497 **\$599**



MILLERMATIC 350/350P

WELDS UP TO 1/2" STEEL,
1/2" ALUMINUM WITH
OPTIONAL SPOOLMATIC 30A OR
ALUMA-PRO SYSTEM

907299 **\$3725**

W/ BUILT IN PULSED MIG

907300 **\$3789**



MILLER ENGINE DRIVEN WELDER-GENERATORS



WILDCAT 200

6500 WATTS PEAK POWER
SUBARU EX40 GAS ENGINE
200 AMP DC WELDER

907403 **\$2679**



BOBCAT 225

11,000 WATTS PEAK POWER
KOHLER CH23 GAS ENGINE
225 AMP AC/210 AMP DC WELDS

907209 **\$3299**



BOBCAT 250

11,000 WATTS PEAK POWER
KOHLER CH23 GAS ENGINE
250 AMP AC/275 AMP DC WELDS
TRI-COR TECHNOLOGY

907211 **\$3599**



BOBCAT 250 DIESEL

11,000 WATTS PEAK POWER
KUBOTA D722 DIESEL ENGINE
EPA TIER 4 COMPLIANT
250 AMP AC/275 DC WELDS
TRI-COR TECHNOLOGY

#907213 **\$7599**



TRAILBLAZER 275 DC

11,000 WATTS PEAK POWER
KOHLER CH23 GAS ENGINE
275 AMP DC ONLY WELDER

907214 **\$3899**



TRAILBLAZER 302

11,000 WATTS PEAK POWER
KOHLER CH23 GAS ENGINE
225 AMP AC/300 AMP DC WELDS
EXCELLENT MIG/FCAW
PERFORMANCE, LIFT ARC TIG

907216 **\$4150**



TRAILBLAZER 302 DIESEL

11,000 WATTS PEAK POWER
KUBOTA D722 DIESEL ENGINE
225 AMP AC/300 AMP DC WELDS
EXCELLENT MIG/FCAW
PERFORMANCE, LIFT ARC TIG

907218 **\$7999**



TRAILBLAZER 302 AIRPAK

13,000 WATTS PEAK POWER
KOHLER CH750 GAS ENGINE
BUILT-IN 26 CFM COMPRESSOR
BUILT-IN BATTERY CHARGING

907447 **\$9699**



SAVE UP TO \$1,000 PER YEAR!
Here's how Bobcat™ and Trailblazer® welder/generators with optional EFI engines can save you money, help the planet and improve job site performance.

SAVE UP TO \$ 1000/YEAR!!
27% BETTER FUEL ECONOMY AND RUN TIMES
33% LOWER EMISSIONS, NO CHOKE, EASY STARTS IN ALL CONDITIONS
EASILY PAYS FOR ITSELF!!

**ELECTRONIC FUEL INJECTION NOW
AVAILABLE IN THE FOLLOWING MODELS:**

- # 907450 BOBCAT 250 W/EFI **\$4125**
- # 907451 BOBCAT 275 DC W/EFI **\$4450**
- # 907452 TRAILBLAZER 302 W/EFI **\$4650**



TIG Welding Power Source 

MILLER TIG WELDERS



MAXSTAR 150STL TIG

150 AMP DC ONLY TIG LIFT ARC
115V/230V DUAL VOLTAGE
FINGERTIP CONTROL & X-CASE

907135017 **\$1499**

DIVERSION 165 TIG

TIG UP TO 3/16" ALUMINUM
165 AMP AC/DC TIG HF START
230V PLUG, BUILT-IN FINGERTIP
CONTROL

907005 **\$1349**

DIVERSION 180 TIG

TIG UP TO 3/16" ALUMINUM
180AMP AC/DC TIG HF START
115V/230V DUAL VOLTAGE
BUILT-IN FINGERTIP CONTROL

907460 **\$1749**

SYNROWAVE 200 RUNNER

TIG UP TO 1/4" ALUMINUM
AC BALANCE CONTROL WITH SYNCRO
START TECHNOLOGY
120V AUXILIARY POWER

907308011 **\$2279**



Air Plasma Cutting 

MILLER PLASMA CUTTERS



SPECTRUM 375 X-TREME

3/8" RATED CUT @ 14 IPM
115/230V DUAL VOLTAGE
12' TORCH

907339 **\$1229**

SPECTRUM 625 X-TREME

5/8" RATED CUT @ 12 IPM
208/230 VOLTAGE, 12' TORCH

907404 **\$1525**

907404011 **\$1605**

(20' TORCH)

SPECTRUM 875

7/8" RATED CUT @ 10 IPM
208/230 DUAL VOLTAGE
20' TORCH

#907390011 **\$1999**

SPECTRUM 875 AUTO-LINE

7/8" RATED CUT @ 10 IPM
208-575 AUTO-LINE VOLTAGE
SINGLE OR THREE PHASE

907396 **\$2250**



MILLER SHADE 5 PLASMA CUTTING GLASSES

235657 BLUE FRAME

235658 BLACK FRAME

235659 ORANGE FRAME



\$12.99 EA

Hypertherm®

HYPERTHERM POWERMAX PLASMA CUTTERS



POWERMAX 30
3/8" RATED CUT @ 15 IPM
115/230V DUAL VOLTAGE W/
BOOST CONDITIONER TO
CORRECT LOW LINE VOLTAGE
15' TORCH, DELUXE CARRY CASE
088004 **\$ 1299**



POWERMAX 45
3/4" RATED CUT @ 10 IPM
208/230 VOLTAGE, W/ BOOST
CONDITIONER TO CORRECT
LOW LINE VOLTAGE
20' T45 TORCH
088016 **\$ 1629**



POWERMAX 65
1" RATED CUT @ 13 IPM
200-600 AUTO VOLTAGE
SINGLE OR THREE PHASE W/
BOOST CONDITIONER
NEW DURAMAX H65 25' TORCH
083270 **\$ 2399**



POWERMAX 85
1-1/4" RATED CUT @ 14 IPM
200-600 AUTO VOLTAGE
SINGLE OR THREE PHASE W/
BOOST CONDITIONER
NEW DURAMAX H85 25' TORCH
087108 **\$ 3099**



Hypertherm® POWERMAX 1000 CLOSEOUT SALE !!

**** ONLY AVAILABLE WHILE SUPPLIES LAST ****

1" RATED CUT @ 12 IPM, 3/4" RATED CUT @ 22 IPM
200-600V AUTO VOLTAGE W/ BOOST CONDITIONER.
SINGLE OR THREE PHASE POWER
LONGEST CONSUMABLE LIFE IN THE INDUSTRY
25' T60 HANDHELD TORCH
083178

\$ 2199

Hypertherm®

With the maximum power and performance for air plasma in our line, the Powermax1650 delivers superior cut capabilities on 1-1/4" (32 mm) thick metals. It has the duty cycle and reliability for the most demanding cutting and gouging jobs.

POWERMAX 1650

1-1/4" RATED CUT @ 20 IPM
1-1/2" RATED CUT @ 10 IPM
059275

\$ 3999



LINCOLN
ELECTRIC

LINCOLN ELECTRIC MONEY MATTERS ENHANCED THRU 12/31/10

It's Your Choice!

Take the cash or take the product.



Purchase any of the five welders below from a participating distributor and choose a cash rebate OR a FREE product. Submit your proof of purchase online and make your selection. **IT'S YOUR CHOICE!**

POWER MIG® 140C (K2471-1)
120 Volt Input MIG Welder

\$589

After \$75 Manufacturer Rebate
or Choose:



VIKING™ Auto-Darkening Helmet -
SlowRider™ (K2830-1)
A \$196 Value!



POWER MIG® 180C (K2473-1)
230 Volt Input MIG Welder

\$689

After \$75 Manufacturer Rebate
or Choose:



VIKING™ Auto-Darkening Helmet -
SlowRider™ (K2830-1)
A \$196 Value!



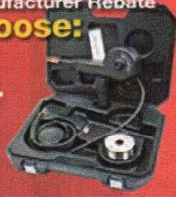
POWER MIG® 216 (K2816-1)
216 Amp Output MIG Welder

\$1,459

After \$125 Manufacturer Rebate
or Choose:



or



VIKING™ Auto-Darkening Helmet -
SlowRider™ (K2830-1)
A \$196 Value!

Magnum™ 100 SG Spool Gun
(K2532-1)
A \$223 Value!



Square Wave™ TIG 175
(K1478-5) 175 Amp TIG Welder

\$1,449

After \$150 Manufacturer Rebate
or Choose:



or



VIKING™ Auto-Darkening Helmet -
SlowRider™ (K2830-1)
A \$196 Value!

Undercarriage (K964-1)
A \$236 Value!



Ranger® 225 (K2857-1)
Engine-Driven Welder/Generator

\$2,999

After \$200 Manufacturer Rebate
or Choose:



or



VIKING™ Auto-Darkening Helmet -
SlowRider™ (K2830-1)
A \$196 Value!

SP-140T (K2688-1)
A \$664 Value!



Orange County Choppers **has gone yellow.**

ESAB is proud to be the official welding equipment supplier of Orange County Choppers. That means no matter which awesome bike they're working on, Paul Teutul, Sr. and his crew trust ESAB machines and filler metals. To celebrate the new partnership, OCC designed and produced a one-of-a-kind ESAB chopper. The bike was unveiled June 21, and will be appearing at events across the country.



Get in on **the action.**

**** NEW ** MIGMASTER SERIES WELDERS, THE MOST POWERFUL IN THEIR CLASS**



MT-250SG SPOOLGUN
EASY DIRECT PLUG IN
FOR ALUMINUM WELDING
36779 **\$699**



MIGMASTER 215 PRO

WELDS UP TO 1/2" STEEL
160 AMPS @ 60% DUTY CYCLE, 250 AMPS @ 20%
208/230 SINGLE PHASE
CREEP START, BURNBACK TIMER, SPOT WELD TIMER



0558101322 **\$1429**

MIGMASTER 280 PRO

WELDS UP TO 1/2" STEEL
250 AMPS @ 60% DUTY CYCLE, 300 AMPS @ 40%
208/230 SINGLE PHASE
CREEP START, BURNBACK TIMER, SPOT WELD TIMER

0558101324 **\$1899**



ESAB MIG-6 ER70S-6 WELDING WIRE

AWS SFA5.18; ER70S-6
ALL POSITION MIG WIRE

Classifications/Approvals
Certified by CWB to CSA W48
AWS/ASME SFA5.18; ER70S-6
CAN/CSA-ISO 14341, B-G 49A
3CG6 (ER49S-6)

ESAB MIG-6 is used for welding carbon sheet steel and plate of various thicknesses. Typical applications include automotive, heavy equipment, ship building, structural pipe, and HVAC duct work.

.035 & .045 33 LB SPOOLS \$1.69 /LB





8/3 EXTENSION CORDS & WELDING CABLE

COPPER WELDING CABLE



PLENTY OF STOCK IN ALL SIZES
AVAILABLE IN MANY COLORS
CUT & ASSEMBLED WHILE YOU
WAIT.

CALL US TODAY FOR PRICING !

25 FT #8/3 -25

\$75

50 FT #8/3-50

\$135



Made in USA



HAND-CRANK WELDING CABLE REELS

#1125WCL-6-C

\$ 459

#1125WCL-12-C

\$ 479

*CABLE NOT INCLUDED
*FREIGHT CHARGES APPLY

LESS CABLE						SIZE INDEX
MODEL	CABLE TYPE & CAPACITY				APRX. LBS.	
	#2	#1	#1/0	#2/0		
1125WCL-6-C	300 ft	250 ft	200 ft	150 ft	38	1
1125WCL-12-C	600 ft	500 ft	400 ft	300 ft	45	2

EXTENDS THE LIFE OF YOUR CABLE AND HELPS PREVENT THEFT



MANUAL ARC WELDING ACCESSORIES



Made in USA



WELDMARK CABLE
CONNECTORS
\$ 8 EA



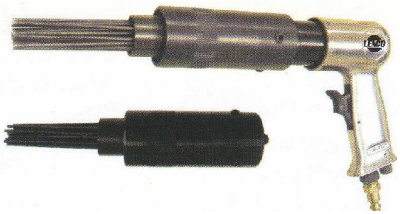
#MHT200 \$ 22
#MHT250 \$ 25
#MHT300 \$ 30



#LPG200 \$ 19
#LPG300 \$ 25
#LPG500 \$ 39



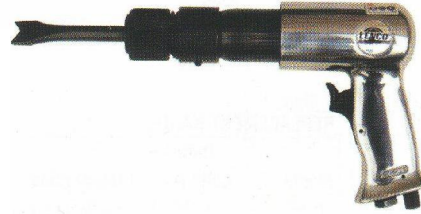
HEAVY INDUSTRIAL PNEUMATIC TOOLS



NEEDLE SCALER

08700
REMOVES RUST,
CORROSION & COATINGS,
AS WELL AS DESCALING

\$ 70



**CHISEL/CHIPPING
HAMMER**

08725
4,000 BPM

\$ 80

ELECTRODE ROD OVENS



\$ 129



LRO-15 W/T

\$ 159



LRO-50

\$ 219



\$ 799

LRO-10 #01910 120/230V

300 DEGREE PRESET, 10 LB CAPACITY

LRO-15 W/T #01916 120/230V

100-300 DEGREE VARIABLE, 15 LB CAPACITY

LRO-50 #01950 120/230V

300 DEGREE PRESET, 50LB CAPACITY

LRO-450 #01970 120V (#01971 230V)

150-550 DEGREE VARIABLE, 450 LB CAPACITY



IRT-16 INFRARED THERMOMETER

É Measurement Range: -76°F to 1157°F

- Operating Range: 32°F to 122°F
- Accuracy: ±2% of reading
- Heavy-duty nylon holster
- Two AAA batteries
- One year manufacturer's warranty

\$ 129



**WMK4000-1 CARBON ARC GOUGING
TORCH W/ 7' SWIVEL CABLE**



5/32" - 1/2" CARBONS
1000 AMP CAPACITY
HIGH IMPACT, HEAT
RESISTANT MATERIAL
COPPER FORGED BODY

\$ 149



ATOM ARC 7018 WELDING ELECTRODES



ATOM ARC 7018 was introduced in the United States in 1952 and continues to set the standard by which all other covered electrodes are judged. This low hydrogen, moisture resistant electrode is known throughout the world for its superior welding performance, tough mechanical properties, crack resistance, high operator appeal and consistent quality.

AWS A5.1; E7018H4R
Mil-E-22200/1 Mil-7018

3/32" 50 LB CANS

\$ 2.10/LB

1/8" OR 5/32"
50 LB CANS

\$ 1.99/LB





REPLACEMENT MIG GUNS MANUFACTURED BY

Tweco

- Ergonomic Handle
- New two-finger molded trigger
- New "Diamond Grip" handle
- Triple insulated stainless conductor tube
- Inter-changeable rear plugs
- Front and rear steel spring strain relief
- Standard consumables by Tweco

MILLER, LINCOLN, OR "EURO" ENDS

(# 2) 250 AMP 15' \$199

(# 4) 400 AMP 15' \$249



TIG TORCHES AND ACCESSORIES



Made in USA

INCREASED COOLING CAPACITY!!

**OVER 4 TIMES LARGER WATER AREA FOR MAXIMUM COOLING
COOLER RUNNING TORCHES = LONGER CONSUMABLE LIFE**

9-25R 25' 125 AMP AIR-COOLED TIG TORCH \$ 70

17FV-25R 25' 150 AMP AIR-COOLED TORCH \$ 125
W/ FLEX HEAD & VALVE

18-25 25' 350 AMP WATER-COOLED TORCH \$ 140

#20-25 25' 300 AMP WATER COOLED TORCH \$ 130

20-25R 25' 300 AMP WATER COOLED TORCH \$ 165
W/ SUPERFLEX HOSES



CK 18



WELDCRAFT 18



POWER POINT

PORTABLE TUNGSTEN GRINDER

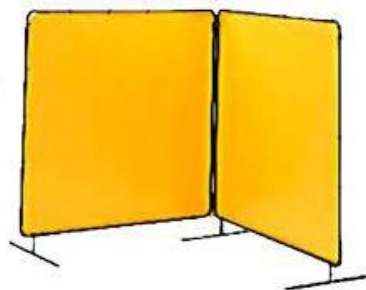


- Double Sided Diamond Wheel
- 120 Volt AC Motor with Variable Speed
- Collets for (1/16", 3/32", and 1/8") Tungsten
- Double Insulated Motor
- Stainless Steel Collets
- Tool Storage Box
- # TS-PPE

\$ 229

TILLMAN

WELDING CURTAINS & BLANKETS



YELLOW, ORANGE, BLUE
TRANSPARENT VINYL
6 X 6 SINGLE PANEL

\$ 75



18 OZ. FIBERGLASS, 1000 DEGREE

584B66 6' x 6' \$ 24

584B88 8 x 8' \$ 46

584B1010 10' x 10' \$ 75

VICTOR®



MANUFACTURED BY

VICTOR®

INCLUDES NEW EDGE REGULATORS!



CUTTER SELECT

0384-0853

INCLUDES ST900FC CUTTING TORCH, HEAVY DUTY 350 SERIES REGULATORS, FLASH ARRESTORS

\$ 368



CONTENDER

0384-2050

INCLUDES 315FC/CA2460 W/ BUILT IN FLASH ARRESTORS COMBO TORCH, CUTTING TIP, HEATING TIP

\$ 344



HEAVY DUTY CUTMASTER

0384-0688

INCLUDES HEAVY DUTY COMBO TORCH, 35 SERIES REGULATORS, CUTTING TIP, WELDING TIP HOSE, GOGGLES & STRIKER

\$ 269



MEDIUM DUTY CUTMASTER

0384-0672

INCLUDES MEDIUM DUTY COMBO TORCH, 25 SERIES REGULATORS, CUTTING TIP, WELDING TIP, HOSE, GOGGLES & STRIKER

\$ 199



25 SERIES REGULATORS

\$ 85



FLOWGAUGE

\$ 75



FLOWMETER

\$ 90



500 PSI HVAC

\$ 89



21" CUTTING TORCH

ST900FC 0381-1621

BUILT IN FLASH ARRESTORS & CHECK VALVES. USE WITH ANY FUEL GAS

\$ 210



EDGE™ SERIES

VICTOR® Professional

COLOR CODED FOR SAFETY
HEAVY DUTY COMPACT DESIGN
UNSURPASSED SAFETY
OUTSTANDING FLOW PERFORMANCE
SERVICE AVAILABLE IN:

AIR, ACETYLENE, HYDROGEN, OXYGEN, CARBON DIOXIDE, LP GAS, & INERT GAS



ESS3 SERIES MEDIUM DUTY: **\$ 145**

ESS4 SERIES HEAVY DUTY: **\$ 199**



#WH-510T (HD-510T)

INCLUDES WH200/DG209 COMBO TORCH, 2 CUTTING TIPS, WELDING TIP, HEATING TIP, 30 SERIES REGULATORS, HOSE, GOGGLES, & STRIKER.

****LIFETIME WARRANTY****



Made in USA



\$ 339



"R" GRADE (ACETYLENE ONLY)

- 25 FT. #7126NLF-300 \$ 22
- 50 FT. #7126NLF-600 \$ 34
- 100 FT. #7126NLF-1200 \$ 65



SPRING DRIVEN TWIN WELDING HOSE REELS

#P-W-125 (25' CAPACITY)

\$ 249

#SHW-N-150 (50' CAPACITY)

\$ 319

#SHW-N-1100 (100' CAPACITY)

\$ 449

ALL PRICES INCLUDE HOSE
FREIGHT CHARGES APPLY

TAME YOUR TWIN-LINE!

Dual Ported Swivel For One-Sided Connection

Swivel Lock Bracket Ensures Maximum Safety

UL Listed 1

"T" GRADE (FUEL GAS)

- 25 FT. #7109NLF-300 \$ 32
- 50 FT. #7109NLF-600 \$ 55
- 100 FT. #7109NLF-1200 \$ 95



Made in USA



FLASH ARRESTOR SETS

- #FBK100 REGULATOR SET
- #FBK200 TORCH SET \$ 40



WELDMARK HOSE REPAIR KITS

INCLUDES CRIMPING

PLIERS

\$ 59



"OUTRIGHT PURCHASE OF CYLINDER" PRICES

- 20 CUBIC FT HIGH PRESSURE CYLINDER \$ 65
- 60 CUBIC FT HIGH PRESSURE CYLINDER \$ 140
- 80 CUBIC FT HIGH PRESSURE CYLINDER \$ 165
- 5 LB CARBON DIOXIDE CYLINDER \$ 65
- 20 LB CARBON DIOXIDE CYLINDER \$ 130
- "MC" 10 CUBIC FT ACETYLENE CYLINDER \$ 50
- "B" 40 CUBIC FT ACETYLENE CYLINDER \$ 75
- #3 75 CUBIC FT ACETYLENE CYLINDER \$ 135

*CONTENTS NOT INCLUDED



- # 810-6LB \$ 69
- # 820-10 \$ 105
- # 401-14FW \$ 397
- # 552-16FW \$ 499



** OSHA REQUIRED FIREWALL CARTS

American Standard Manufacturing



PROPANE FUEL CYLINDER CABINETS

HIGH PRESSURE CYLINDER STORAGE



#FH04202SS (4 CYLINDERS) \$ 389

#FH06202SS (6 CYLINDERS) \$ 419

#FH9302MS (9 CYLINDERS) \$ 489

#FH08202LS (8 CYLINDERS) \$ 559

#FH12302LS (12 CYLINDERS) \$ 599

#FH16402LD (16 CYLINDERS) \$ 829

FREIGHT CHARGES APPLY
INCLUDES ALL LABELING AS SHOWN



#HP08202S (8 CYLINDERS) \$ 559

#HP12302S (12 CYLINDERS) \$ 599

#HP16222S (16 CYLINDERS) \$ 1,059

#HP20322S (20 CYLINDERS) \$ 1,089

#HP24332S (24 CYLINDERS) \$ 1,119

ADD AN OSHA FIREWALL \$ 199

FREIGHT CHARGES APPLY



MANUFACTURED BY



WESTERN ENTERPRISES
GLOBAL GAS MANAGEMENT TECHNOLOGY

SOLDERING/BRAZING OUTFITS



(ACETYLENE "SCREW-IN" FEATHER FLAME)

#WM300101 \$ 119

(ACETYLENE "SNAP-IN" TURBO FLAME)

#WM300205 \$ 149

(PROPANE/LP "SNAP-IN" TURBO FLAME)

#WM300304 \$ 169



WM300801

HEAVY DUTY
HIGH OUTPUT
PROPANE TORCH

\$ 75

WB-101

INCLUDES BUILT-IN
PUSH-BUTTON
STRIKER

\$ 95



TANK TOP PROPANE HEATERS

PROPANE CYLINDERS



\$ 45

MH12T



\$ 95

MH24T



\$ 135

MH42T



20# CYLINDER \$ 39

30# CYLINDER \$ 69

40# CYLINDER \$ 89

100# CYLINDER \$ 139

CYLINDER ONLY, CONTENTS NOT INCLUDED

THERMAL ARC

95 S 115V STICK/TIG PACKAGE

PORTABLE STICK WELDING @ ONLY 10 LBS

INCLUDES CARRYING CASE, ACCESSORIES, AND INSTRUCTIONAL DVD

#W1003202 STICK PKG #W1003203 STICK/TIG

\$ 305 \$ 429



South Jersey WELDING SUPPLY

Like

Find us on **facebook**

Or on the web @www.sjwelding.com



EDGE EYEWEAR POLARIZED SAFETY GLASSES



\$ 29.95

